

Technical Instruction- E4 lens replacement



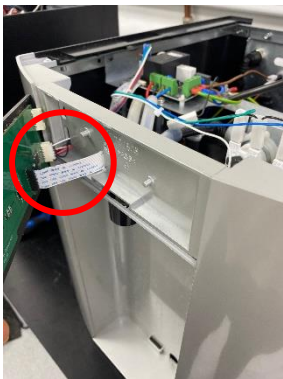
1. Remove the two screws from the back of the lid component.



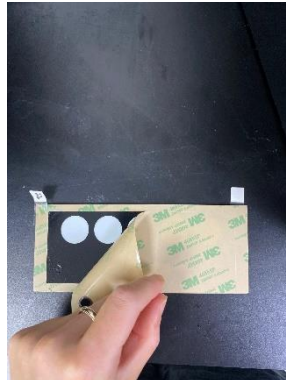
2. Remove lid component from the top of the main component.



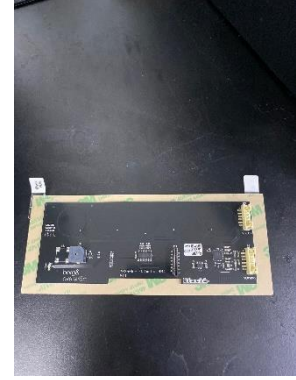
3. Carefully peel away lens and PCB.



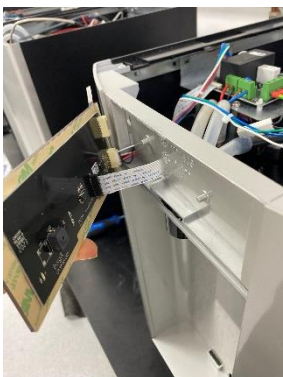
4. Carefully disconnect both connectors from the PCB.



5. Peel away inner backing sticker from the new lens.



6. Place the new PCB onto the lens.



7. Connect both connectors to the new PCB, take away remaining sticker and press onto unit.



8. Place lid back onto main component.



9. Screw back on the two screws onto the back of the lid component.